

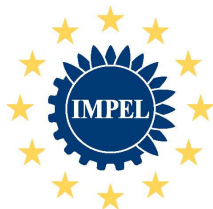


easyTools
★★★★★

IMPEL Project

Risk Assessment in Inspection Planning

A European Perspective



European Union Network for
the Implementation and Enforcement
of Environmental Law

Project Members

-  Horst Büther, horst.buether@brk.nrw.de
Wulf Böckenhaupt, wulf.boeckenhaupt@brk.nrw.de
Hartmut Teutsch, hartmut.teutsch@gewerbeaufsicht.bremen.de
-  Eva Rychlíková, rychlikova@cizp.cz
-  Thomas Ailleret, thomas.ailleret@developpement-durable.gouv.fr
-  Cormac MacGearailt, c.macgearailt@epa.ie
-  Matteo Valota, m.valota@arpalombardia.it
-  Durak Arifi, durak.arifi@yahoo.com
-  Tony Liebrechts, tony.liebrechts@minvrom.nl
Rob Kramers, kramers@infomil.nl
Hielke Kuitert, hkuitert@brabant.nl
Jan Teekens, jan.teekens@minvrom.nl
-  Joanna Piekutowska, j.piekutowska@gios.gov.pl
-  Florin Homorean, cjolt@gnm.ro
-  Vladimir Kaiser, vladimir.kaiser@gov.si
-  Jesus A. Ocio, jan-ocio@ej-gv.es
-  Yakup Ayan, yakupayan@yahoo.co.uk
-  Alison Simmons, alison.simmons@environment-agency.gov.uk

Project Management: Dr. Horst Büther, Bezirksregierung Köln, Zeughausstraße 2-10,
50667 Köln, Germany
Fon: +49 221 147 2252, Fax: +49 221 147 4168
Project operation time 2010-2011, Version May 2010

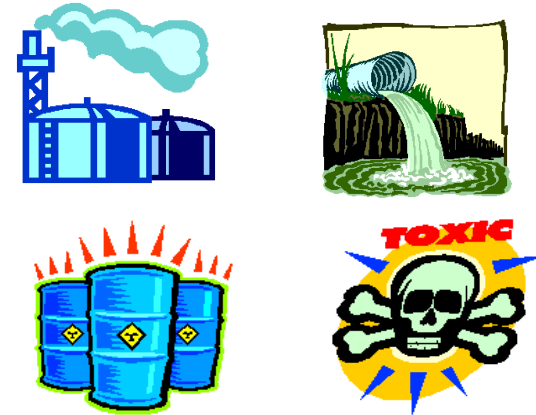
Main Target Group



Basic principles

- Transparent risk calculations for prioritising environmental inspections
- Support of member countries specific inspection planning
- Flexible criteria
- Flexible graduation of criteria
- Easy to adjust to specific country needs
- Ability to grow with time depending on the needs of the inspection authority
- Many languages - easy to translate
- Internet based programme with download data storage and upload data use

Risk Assessment Targets



Objectives

- Evaluation of existing European inspection tools and risk criteria
- Description and assessment of risk criteria
- Development of a risk assessment tool easily adaptive by every IMPEL member country
- Consideration of the requirements of the EU environmental law and the RMCEI
- Availability on the IMPEL website as an advanced interactive tool from the internet
- Integration into the inspection cycle of the IMPEL Step by step guidance book
- Taking into account IMPEL activities to make the European law better applicable

Background

Since the beginning of its existence the IMPEL network is working on the improvement of inspection activities of its member countries. Milestones of these activities were the publications of "Minimum criteria for inspections" (1997-1999), "IMPEL Reference Book for Environmental Inspection" (1999) and "Step by step guidance book for planning of environmental inspection" (2007). The work on the former publications resulted in the European Union issue of the "Recommendation on minimum criteria for environmental inspections" (**RMCEI**) in 2001. Meanwhile IMPEL has given new input for the further development of the RMCEI (2007).

A key issue of the RMCEI and the guidance book is the prioritisation of environmental inspections. An essential part of this prioritisation is the assessment of the probability of environmental disruptions caused by the IPPC installations under surveillance of the competent authorities. Such kind of risk assessment also plays a key role in inspection planning according to the Seveso II directive and the upcoming Industrial Emissions Directive (IED).

The availability of basic data for quantifying the risk criteria differs largely between the member countries. This implies that already existing risk assessment tools which require a specific fixed set of data do not fulfil the needs of most member countries. As a consequence, nearly every competent inspection authority needs its own specific risk assessment tool. To avoid this the IMPEL Project "Doing The Right Things 3" gave the following recommendations for future activities (among others):

- **Development of an easy risk assessment tool**
- **Development of an advanced interactive IT tool that supports planning of environmental inspection**
- **Defining standard set of risk criteria**
- **Guidance for performance monitoring**

Based on these conclusions the aim of this project is to develop a flexible and user friendly programme for the environmental risk assessment within the planning of inspections as an advanced interactive IT tool from the internet.

The Tool

The tool for the assessment of environmental disruptions caused by industrial activities – short: risk assessment tool - will be part of the "planning cycle" described in the "Step by step guidance book for planning of environmental inspection". It will take into account the needs of the IMPEL member countries as well as the requirements of European environmental law and it will be linked to the RMCEI. It will be based on the result of an evaluation of risk assessment tools currently used in IMPEL member countries. There will also be a description and an evaluation of risk criteria used until now and of the criteria listed in the IED proposal. This will be done in the light of the IMPEL assessment of the IPPC recast proposal and the IMPEL input for the further development of the RMCEI with the aim to make them more practicable.

The tool will be based on the basic ideas of already existing risk assessment tools and the recommendations of the DTRT3 project. There will be a set of about 20 risk criteria, some of them mandatory (based on European environmental law) and some of them free to choose. As a result, each country can start with a set of criteria that suits its needs best and take into account the data which can be easily procured. Later the set of criteria can be extended individually in line with the enhanced availability of basic data.

The programming of the risk assessment tool will be done by a consultant. The programme will be created in a way that every inspection authority in every country can use and adapt it to its own needs without a detailed knowledge of (internet) programming. It will be produced in an English, French and German version that could be translated into every other language version within a few hours.

A workshop with participants from all interested IMPEL member countries in 2011 and a format of the risk assessment tool on the IMPEL website will ensure its availability for all inspecting competent authorities.